

2025 Continuum of Care Notice of Funding Availability Workshop & Technical Assistance

DECEMBER 4, 2025

Housing & Urban Development (HUD) Changes

NEW FY2025 POLICY PRIORITIES

Ending the crisis of homelessness on our streets

CoCs expected to direct resources towards outreach, intervention, and assistance consistent with Executive Order on “Ending Crime and Disorder on America’s Streets.”

Prioritizing treatment and recovery

CoCs expected to prioritize projects that provide treatment and services needed to recover and regain self-sufficiency, including on-site treatment and participation requirements in services.

Advancing public safety

CoCs expected to cooperate with law enforcement to advance public safety. HUD cited the Supreme Court decision in *Grants Pass v. Johnson* as upholding the authority of local governments to prohibit public camping.

Promoting self-sufficiency

CoCs expected to prioritize projects that help lead to long-term economic independence for individuals and families. This would allow them to exit homelessness and prevent future returns to homelessness.

Improving outcomes

CoCs should prioritize projects that promote self-sufficiency, increase employment income over government assistance, and promote treatment and recovery.

Minimizing trauma

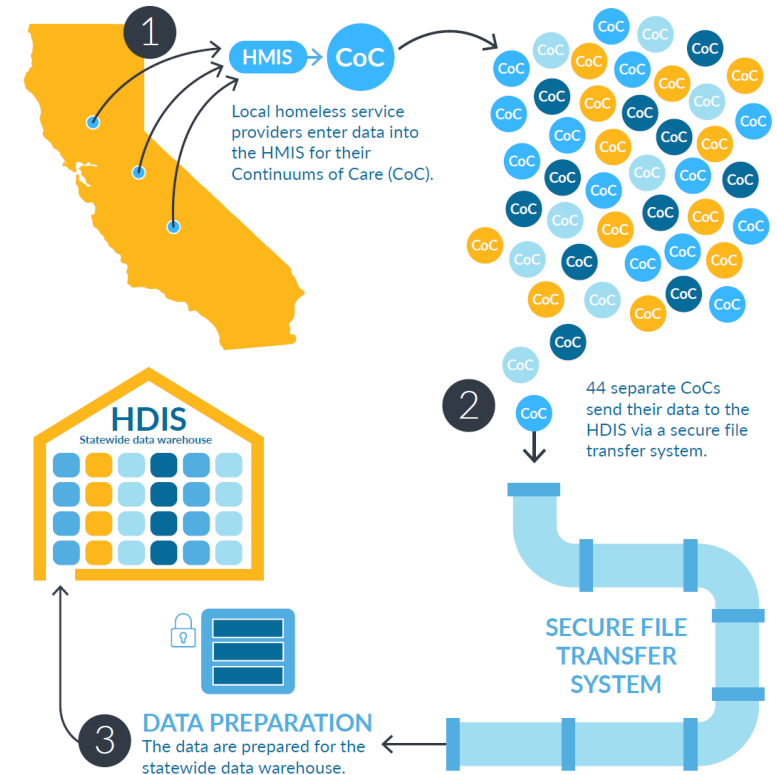
CoCs should encourage the use of trauma informed care, ensure safety of program participants, and access to ‘safe, single-sex spaces’ for women.

Improving System Performance

Will the proposed project:

- Reduce the length of time people experience homelessness?
- Increase earned income for eligible participants?
- Prioritize a cost-effective approach with positive housing outcomes?
- Provide supportive services for housing retention?
- Collaborate with behavioral health, healthcare, and leverage other resources?

More details in the Notice of Funding Availability (NOFA)




FY25 HUD CoC Grant Funding and Tiers

- ▶ Nationwide \$3.918 Billion available; \$52 Million available for DV Bonus projects.
- ▶ Estimated \$3.749 Million Annual Renewal Demand (ARD) for VC CoC.
- ▶ Tier 1 limited to 30% ARD or \$1,124,876 which must include HMIS/CES project.
- ▶ Permanent Housing (PSH/RRH) limited to 30% overall (\$1,124,876) in Tiers 1 and 2.
- ▶ Up to \$642,221 available for new DV Bonus projects in Ventura County.
- ▶ Up to \$1,284,442 available for new Bonus projects (highly competitive).
- ▶ VC CoC Planning Grant is limited to \$321,110 and not part of ARD or ranking.

Permanent Supportive Housing (PH limited to 30% ARD)

- ▶ Project Description to include target population(s), anticipated outcomes & coordination with other organizations.
- ▶ Filling vacancies through Coordinated Entry
- ▶ Program Participants/Subpopulations
- ▶ Increasing Employment Opportunities
- ▶ Supportive Services Participation Requirements
- ▶ Housing Type & Location
- ▶ Budgets

A stylized illustration of a house with a brown roof and walls, mounted on a dark brown chassis with four wheels. The house is positioned on a green, grassy hill. In the background, there are other houses and trees under a blue sky with white clouds. A blue rectangular shape is visible in the top right corner of the image.

Rapid Rehousing (PH limited to 30% ARD)

- ▶ Project Description to include target population(s), anticipated outcomes & coordination with other organizations.
- ▶ Fill vacancies through Coordinated Entry
- ▶ Program Participants/Subpopulations
- ▶ Increasing Employment Opportunities
- ▶ Permanent Housing Placements
- ▶ Supportive Services Participation Requirements
- ▶ Housing Type & Location
- ▶ Budgets

A photograph of a transitional housing facility. The image shows several white, modular housing units arranged in a row. In front of the units are several wooden pallet benches. The ground is covered in gravel. There are trees and a clear sky in the background. A semi-transparent dark grey box is overlaid on the left side of the image, containing the title and a list of bullet points. A solid blue rectangle is located in the top right corner of the slide.

Transitional Housing

- ▶ Cannot replace local or state funded programs with this funding
- ▶ Project description
- ▶ CES participation
- ▶ Supportive service participation requirements
- ▶ Focus on connecting to employment, treatment, and recovery
- ▶ Budgets

A photograph of a woman with long dark hair, wearing a black jacket and crouching down on a city sidewalk. She is looking towards a person sitting on the ground. The person is wearing a red hoodie and a brown jacket, and is holding a cardboard sign that says "WILL WORK". The background is a blurred city street with other people and buildings. A semi-transparent dark grey box is overlaid on the image, containing the title and a list of bullet points. A blue rectangular graphic element is in the top right corner.

Supportive Services Only – Street Outreach

- ▶ Cannot replace local or state funded programs with this funding
- ▶ Project description
- ▶ CES participation
- ▶ Supportive service participation requirements
- ▶ Focus on connecting to employment, treatment, and recovery
- ▶ Partnership with local law enforcement and public safety
- ▶ Budgets

Renewal applications

- ▶ Priority will be given to top scoring PSH projects based on the new tiered structure.
- ▶ Transition grants are allowable to change the project type of a renewal from PSH/RRH to Transitional Housing (TH) or Supportive Services Only (SSO). Providers must ensure a plan for currently supported residents to retain permanent housing.
- ▶ The “Submit without Changes” function is not applicable for renewing project applications due to the significant HUD policy shifts and new service participation requirements. Additional language should be incorporated to ensure alignment with HUD.
- ▶ HUD will review all project applications to ensure alignment with federal policy and new service participation requirements.

New Project Applications



- ▶ Must demonstrate the capacity to effectively serve the targeted population.
- ▶ Projects align with HUD's policy priorities and implement service participation requirements.
- ▶ Existing projects may apply for a "transition grant" by changing the project type from PSH/RRH to Transitional Housing (TH) or Supportive Services Only (SSO).
- ▶ Priority will be given to new TH and SSO project proposals that include service requirements, incorporate behavioral health supports, and leverage other resources.
- ▶ HUD will review all project applications to ensure alignment with federal policy and new service participation requirements.

Review and Ranking Process



- ▶ Ranking of renewal projects must incorporate scoring on project performance, **system performance and effectiveness**.
- ▶ CoCs may use funds from existing grants to create **new projects through transition grants**. Underperforming and low priority projects will be considered for reallocation by the CoC Board.
- ▶ **Tier 1 will equal 30% of the CoC Annual Renewal Demand (ARD)** and Tier 2 is the balance of ARD plus bonus funding.
- ▶ Permanent Housing (PSH/RRH) projects are limited to 30% overall in Tier 1 and 2 combined. This equals \$1.124M for all PH projects.
- ▶ The CoC Data Committee will review and rank all project applications on 12/17/2025. **Ranking to be presented to the CoC Board on 12/19/2025 for review and approval.**
- ▶ The CoC Planning Grant is not ranked per HUD's guidance.
- ▶ **Applicants may appeal** any decision in writing to CoC staff by 12/18/2025 by noon, and the appeal will be heard by the CoC Board on 12/19/2025 for consideration.

New Project Quality Threshold Criteria	
	Minimum score to be awarded. If awarded, must meet <u>all</u> of the criteria listed.
Project Type	Key Criteria
Transitional Housing (TH) Min Score: 7/10	Supportive services will be required for participation.
	Applicant has experience operating a TH and will leverage other public/private sources.
	Project will provide 40 hours of customized services (with some exceptions) Seniors 62+ and those with certified disabilities are exempt from the “earned income” measure. These populations will need to be measured in the “unearned income” (SSI) measure for reporting.
Supportive Services Only (SSO)- Street Outreach Min Score: 5/6	Project will leverage other public/private sources and provide services necessary to exit homelessness and increase self sufficiency for program participants including those who do not traditionally engage.
	Applicant must have experience providing outreach services and demonstrate a history of partnering with first responders and law enforcement and will not interfere with enforcement of public camping and drug use laws.
Permanent Supportive Housing (PSH) Min Score: 4/6	Project will leverage other public/private sources to provide supportive services.
	Will require participation in services.
	Applicant has previously operated a project where employment incomes were improved.

HUD FY25 Risk Review

- ▶ All projects will be reviewed for compliance with financial controls, effective management systems, results of audits, project quality and project eligibility.
- ▶ HUD has added two new criteria to this risk review:
 - ▶ Other public sources such as newspapers, Inspector General or Government Accountability Office reports or findings, or other complaints that have been proven to have merit; and
 - ▶ History of subsidizing or facilitating activities that conflict with the purposes of the FY25 HUD NOFO

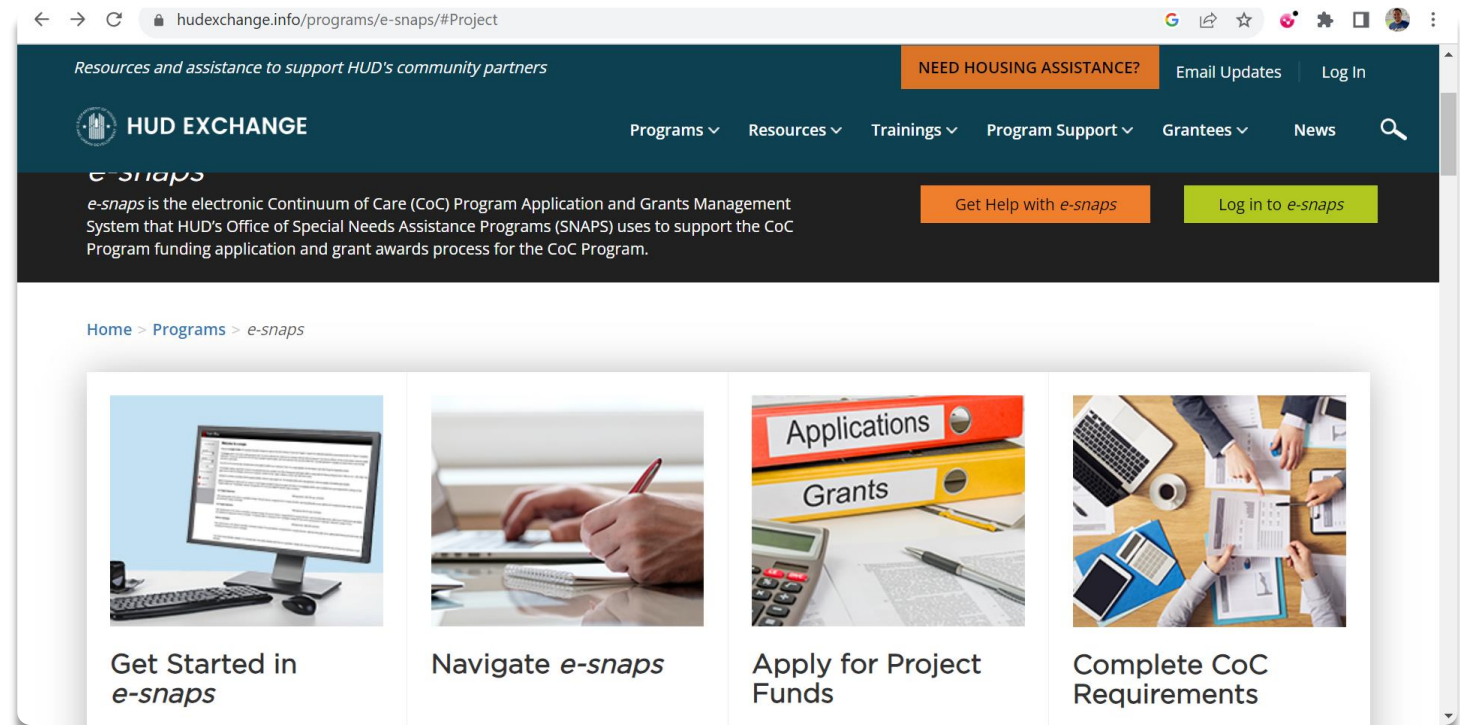


Completing an Application in e-snaps

Detailed e-snaps instructional guides posted on HUD Exchange

<https://www.hudexchange.info/programs/e-snaps/>

- **FIRST TIME APPLICANTS** must create a user profile
- **RETURNING APPLICANTS** must update the applicant profile



Applicant Profile in e-snaps



- ▶ Review or Create Applicant Profile
 - ▶ Attach valid Code of Conduct
 - ▶ Non-profit documentation attached
 - ▶ Authorized Representative is the designated contact in the System for Award Management (SAM) system and in your Applicant profile.
- ▶ <https://files.hudexchange.info/resources/documents/Updating-the-Applicant-Profile.pdf>



Accessing the e-snaps application



After Applicant Profile is complete, applicants can access new or renewal applications in e-snaps



Importing Data from previous renewals



Follow detailed instructions for new or renewal applications



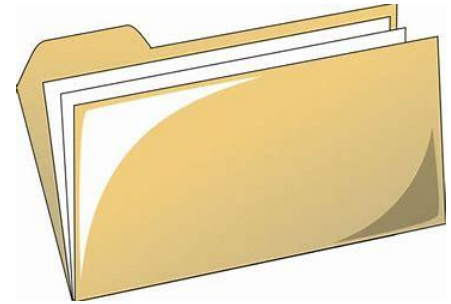
Grant # from GIW <https://www.hudexchange.info/programs/coc/coc-giw-reports/>



CoC # CA-611

SF-424 Screens

- ▶ HUD 2880 (Applicant/Recipient Disclosure)
<https://files.hudexchange.info/resources/documents/How-to-Complete-the-HUD-Form-2880-in-e-snaps.pdf>
- ▶ HUD form 50070—drug free workplace certification
<https://www.hud.gov/sites/documents/50070.PDF>
- ▶ SF-LLL (Disclosure of Lobbying Activities)
<https://www.hudexchange.info/resource/308/hud-form-sflll/>



Screen 2B

Recipient Performance

- ▶ On-time APR 10/31/2024-9/30/2025*
- ▶ HUD Monitoring findings, OIG Audits?
- ▶ Quarterly Drawdowns of funds?
- ▶ Full expenditure of award?
- ▶ Performance Outcomes?

***Renewing providers may improve data quality prior to pulling the APR for the HUD project application submission. Please check annual assessments for accuracy and completeness.**

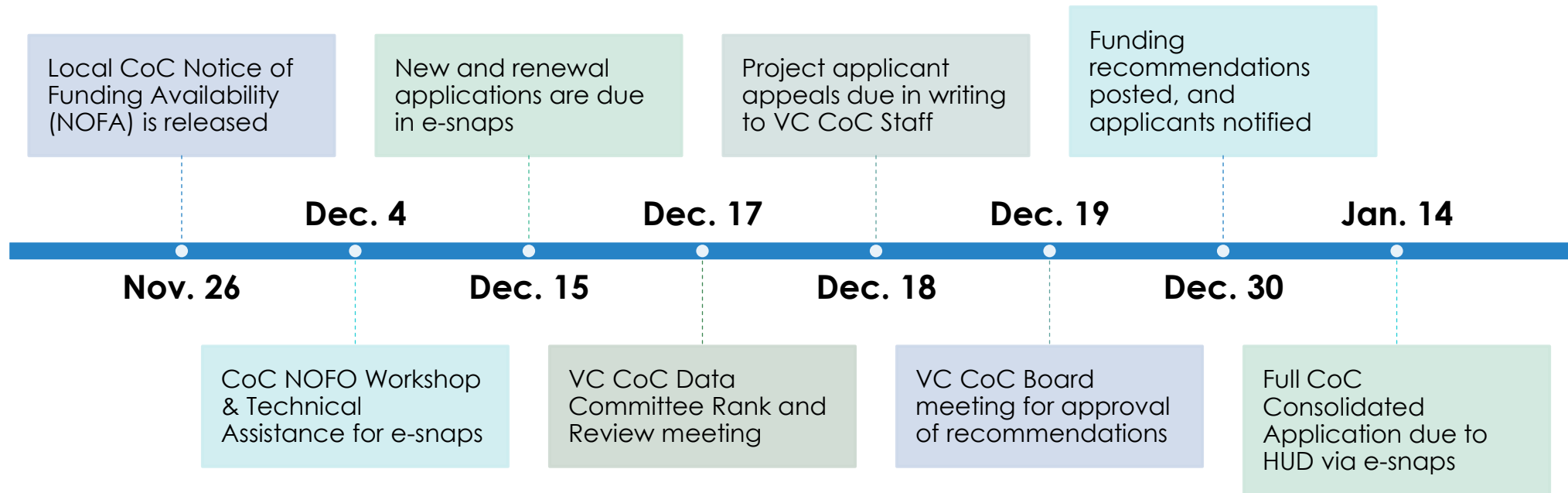
Budgets

- ▶ **Match** – all CoC projects require 25% match of cash or in-kind services.
- ▶ **PSH Eligible Costs:** Leased Units/Structures, Rental Assistance, Supportive Services, Operating, HMIS and Acquisition/Rehabilitation/New Construction
- ▶ **PH-RRH Eligible Costs:** Rental Assistance, Supportive Services and HMIS
- ▶ **TH Eligible Costs:** Leased Units/Structures, Supportive Services, Operating, and HMIS
- ▶ **SSO Eligible Costs:** Street Outreach Supportive Services, Transportation, and HMIS

Information on eligible activities and expenses can be found in the Interim Rule
<https://www.hudexchange.info/resource/2033/hearth-coc-program-interim-rule/>

See Detailed Instructions on HUD Exchange for completing application budget detail

2025 Local CoC Notice of Funding Availability (NOFA) Timeline





Questions?

Please submit questions via email to:
VenturaCoC@venturacounty.gov